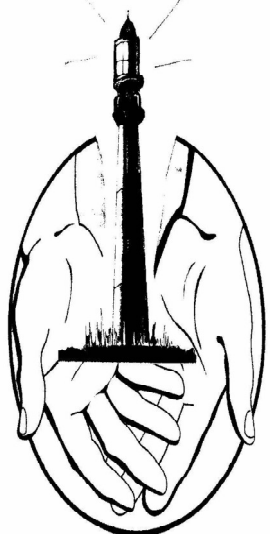


A BEACON OFFERING CHRIST TO ALL



A Publication of the First United Methodist Church of Rockport

The Rockport Beacon

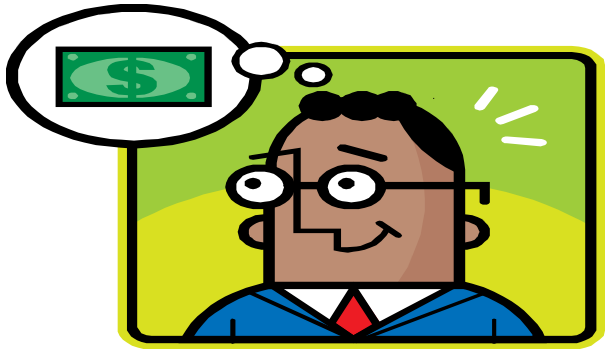
“Let Your Light So Shine...” Matthew 5:16

Mission Statement

Offering Christ to all through worship, ministry, discipleship and fellowship to the glory of God.

Vol. 17, Number 2, February, 2011

www.fumcrockport.org



Stewardship Sunday is February 13, 2011

Stewardship is using the gifts which God has given us with integrity and faithfulness, that we might “*Do Life God’s Way!*” As Christians, we are to pray daily, attend worship regularly, give sacrificially and serve faithfully.

As one of the 500+ current members of *First United Methodist Church of Rockport*, one can easily feel significantly responsible for the ongoing financial well-being of the church. The church depends heavily upon

the faithful stewardship of its members.

For those with families, making your decisions on prayers, presence, gifts, and service **as a family** is an important spiritual growth opportunity. Every person needs to know that our commitment is not only vital to the life of the church, but is vital to our own spiritual health as we seek to advance God’s Kingdom.

When one ventures near the Word of God and the work of His church, a burdensome responsibility often unexpectedly blooms, changing into a rewarding opportunity for the giver. Each member’s generous monetary support allows **FUMC** to provide and maintain church programs that further the ministry of The United Methodist Church: Worship Services, Sunday School, Music Ministry/Choir/Bells, Children’s Ministry, Vacation Bible School, Youth Ministry, Outreach Ministry, Local Missions, Adult Ministry/Counseling, Worldwide Missions, Church Maintenance, Staff Administration, Good Samaritan, (Continued on Page 5)



The Gospel According to Thom

Stewardship: Doing Life God's Way

What is Christian Stewardship? *"Each of you, as a good manager of God's gifts, must use for the good of others the special gift you have received from God." (1 Peter 4. 10)* Stewardship is managing with integrity and faithfulness the gifts which God has given. As Christians we are to pray daily, attend worship regularly, give sacrificially and serve faithfully.

On Commitment Sunday, February 13, 2011, each of us will have the opportunity to make a financial Faith Investment in the operating budget of His church in 2011.

What is the goal of giving? To declare that Jesus is Lord of our lives! It is by trusting Christ fully with our lives that we discover the joy and wonder of God's love. We give so that we might truly open our hearts to the power and love of our Lord.

- **Prayer**—Commit to pray for FUMC, its minister, its members and its ministries.
- **Presence**—Commit yourself to regular attendance at church, Sunday school and small group activities throughout 2011.
- **Gifts**—Commit to FUMC ministries by stepping towards or beyond a tithe for 2011. Commit to developing a personal giving plan that will increase your faithfulness each year. We will consecrate these gifts in a special service on February 13.
- **Service**—Commit to serving God through many opportunities available at our church. Consider teaching, assisting with worship services, helping with our Children and Youth Programs, leading a Bible study, helping in the church office or volunteering at the prescription assistance program. Read **The Rockport Beacon** carefully each month for special service opportunities.
- **Witness**—Commit to living a life that others will see Christ in and through you.

Often the Bible promises that right living leads to God's increased presence in our lives. This does not mean that we give in order to receive. Rather, we affirm the truth of Jesus' teaching, that *"where your treasure is, there your heart will be also."* (Matthew 6.21)

The Rockport Beacon

The Rockport Beacon is published monthly by the First United Methodist Church of Rockport, 801 E. Main Street, Rockport, Texas 78382.

Send address changes to *The Rockport Beacon*, P. O. Box 1045, Rockport, Texas 78381.

First United Methodist Church Staff

Pastor.....Thom C. Elliott
Business Manager.....Lesa Larsen
Director of Discipleship..... Jan Burkhart
Administrative Assistant/Editor.....Beverly Robberson
Custodian.....Keith Farley
Director of Music.....Linda Hamilton
Choir Director.....Ruth Reagan
First Learning Tree Director.....Kathy Daniels

From the Christian Education Director

It is Fabulous February!!!

2011 is off to a super start in education here at FUMC.

Family Game Night was a big success. We had 11 families join in on the fun filled night of games, food and fellowship. The game of the night was "Snowball Fight". Be sure to find out how to play that game.

Children's Bells is in full swing. Don't forget Wednesdays at 4:15 in the choir room.

Be sure to keep saving your old cell phones and inkjet printer cartridges. We just received our first check and I was pleasantly surprised. Thank you to all those who have donated and will donate.

The Souper Bowl of Caring is coming. The Souper Bowl of Caring inspires youth to fight hunger and poverty. Over the past years our church has collected over \$1300. It has been a few years since FUMC has participated in the Souper Bowl so we are jumping back in with both feet. The youth will be collecting monetary donations (Make checks payable to FUMC) on Super Bowl Sunday, February 6, 2011. 100% of our donations will go to Good Samaritans.

Mark your calendars and make plans to attend "Dinner and a Show", Wednesday, February 23, 2011 at 5pm. Our outstanding children and youth will be serving you dinner and showing off their talents. Please make plans to attend this special Wednesday meal. The menu will be pork loins, mashed potatoes, green beans,

garlic bread and brownies. All proceeds will go towards the children and youth activities.

Until next month,

Jan

Windswept Oaks Community Emmaus Gathering Feb. 3



The February Gathering will be on Thursday, February 3rd at 6:00 p.m. in the Fellowship Hall. There was a great turn out at the January meeting. We hope to continue that great attendance. Bring a covered dish to share and join in the fellowship and worship.

There is a woman's Walk to Emmaus in February and a men's Walk to Emmaus in March. If you are interested and wondering what you need to do to sign up, please contact Steve Johnson at 727-2352 or (210)416-4367/

Newsletter deadline is February 14th





FIRST LEARNING TREE

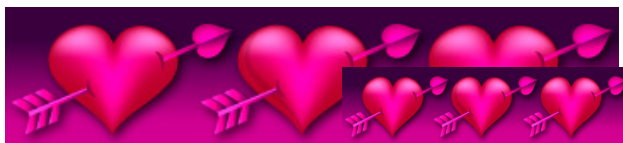
By Kathy Daniels

The Winter months always bring a much needed brake from our usual hectic pace. February is a month that I always enjoy. Valentines Day is a happy celebration. The kids are excited about sharing Valentines and it's an event that is easy to survive!

February is also a month that will find us learning about the Great State of Texas, rodeos, and ground hogs. Spring will be approaching with warmer weather and hopefully more sunshine.

We are working on doing some upgrades to the bathroom that is across from my office. We will be installing 2 child size toilets and 2 child size pedestal sinks. The existing handicapped stall will remain but the sink will be replaced with an adult size pedestal sink. All of these changes will help to make it a more sanitary bathroom and one that is child friendly. I hope that you will stop by after the work is completed and see what an improvement it has made. With a little luck, it should be completed by March.

Happy Valentines Day



(Continued from Page 1)
First Learning Tree and Prescription Assistance (RX Program)

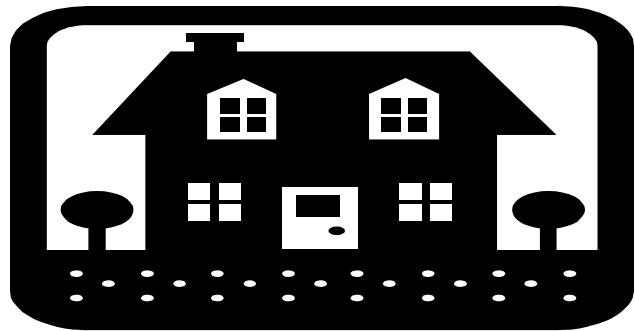
What amount should I pledge?

Most members who regularly or occasionally attend FUMC feel the need to support the church and its programs.

Some members feel their support of the church is the act of returning a portion of the gifts God has given them.

Your pledge is a private matter between you and God. The dollar amount of the gift is not as important as whether or not your pledge accurately reflects your commitment to God and His home in this world...the church.

If you have given in the past, perhaps it is time to increase your pledge. If you have never given to support the works of this church, perhaps this is the time to begin.



**As for me and my
house, we will serve
the Lord.**

Joshua 24:15

Trustees Corner

By Graham Painter, Chairman

As most of you know, the landscaping around our Church is the best it has been in memory; probably the best ever. For example, last spring we won first place in the citywide contest, "Rockport in Bloom". It raises our spirits to see the beautiful blooms and foliage as we enter and exit our Church.

Credit for this goes to Harrell Minzenmayer who took on this project at the beginning of 2010. Now, Harrell, has decided to focus on other activities, and we need a new leader to keep our Church landscaping looking great. This leader can develop their own vision, decide how many others to involve, and how to organize the work. Please come forth right away and volunteer for this important role.



Children's Church Journey Continues

We had such a great fall program. If you missed our play on January 2nd, don't worry. The children enjoyed it so much we are already planning one for Lent and the end of the year.

Our collection of diapers for Good Samaritans went really well also and they were thrilled when we took them the diapers. We will continue to collect (size 4 & 5 are the size requested the most) in front of our room (Fellowship Hall #2). We will take them once a month to Good Samaritans.



Praise Ringers have begun spring rehearsals and are desperately seeking players—at least two! If you would like to play, please talk to Linda Hamilton, Director of Music, or just join us on Mondays at 5:15 p.m. We have lots of fun and our music is not too

Please encourage our children every chance you get. They really are a great bunch.

Ms. Chris

Lost and Found

A ring has been turned into the office. If you have lost a ring, please contact Beverly in the church office.

hard. Really!



FEBRUARY BIRTHDAYS

- | | |
|-------------------------|---------------------|
| 01—Dona Popp | 13—James Carrick |
| 02—Betty Manwaring | 17—Barbara Meador |
| 03—Ann Clegg | 18—Dr. John Johnson |
| 04—Richard Bianchi | 18—Jim Metzter |
| 04—Ellie Saenz | 19—Judy Currie |
| 06—Melva Turner | 19—Ken Helbling |
| 07—Clyde Townsend | 19—Katy Jamison |
| 08—Marianna Gage | 23—Art Smith |
| 08—Patsy Phemister | 23—Olivia Smith |
| 08—Bert Siefker | 23—Jana Tarkington |
| 10—Norman Spears | 24—Theresa Holloway |
| 11—Sharon Mungo | 25—Alan Barre |
| 12—Richard Luton, Sr. | 25—Scotty Kautz |
| 12—Rev. Calvin Peterson | 28—Ray Saenz |

Wednesday Night Fellowship Meals Continue

The menus for the Wednesday night Fellowship meals which are open to everyone free of charge and begin each week at 5:00 p.m. in the Fellowship Hall are : Feb. 2 Spaghetti, mixed veggies, spring salad, garlic bread and ice cream. Feb. 9 Hamburgers/pulled pork bar-be-que, baked beans, potato salad and cookies/ice cream. Feb. 16 baked potatoes with all the fixings, green salad and brownies. Feb. 23 pork loins, green beans, mashed potatoes, garlic bread and brownies.

Dr. John Johnson will be in charge of the worship on Feb. 2nd. Richard Haynie on Feb. 9th, Richard Butler Feb. 16th and the kids, tweens and youth will serve you dinner and lead the worship on Feb. 23rd.

If you would like to lead a Wednesday night worship from 5:45 p.m. to 6:15 p.m., please contact Karen Rystad, Lay Leader.

Don't forget to sign the back of the registration card on Sundays indicating your reservation for a meal. There is also a sign-up sheet on the Volunteer Desk on which you may make your reservation.



ANNIVERSARIES FOR FEBRUARY

- 10—Skip & Janet Timmer
- 11—Dan & Kathy Daniels
- 18—Weems & Marjorie Farrer



Free Tax Preparation Service Available

AARP Tax Counselors will be available to assist most taxpayers in the preparation of their 2010 taxes. This service is free including e-filing, and is provided by trained and certified counselors. The taxpayer does not have to be an AARP member or over a certain age to take advantage of this service.

The schedule is as follows:

Dates: February 1 through April 13

Each Tuesday 8:30 am—12:30 pm

Each Wednesday 8:30 am—4:30 pm

Place is Rockport Center—RCUG Lab (formerly Rockport School) 619 N. Live Oak Street, Rockport

The wait for tax preparation is normally minimal, so don't be discouraged by the number of cars in the parking lot.

For additional information, please call Pat McKelvey (361)729-7003, or visit the website www.aarp.org/taxaide.



Update on our Troop Support

Chris Weber and the Coastal Bend Troop Support say thank you to the many wonderful volunteers who helped in the mailing of over 500 boxes to our troops during Thanksgiving and Christmas. Chris says, "We are a 501 3c charity now and we have a building on Church Street where we can accept donations and box up our supplies." We mail about 100 boxes a month and the postage is not paid by the government—it is paid by volunteers and their contributions. For more info, contact Chris.

Thank You!

From your church staff for the very generous Christmas gift we received from the congregation.



Save the Date:

Vacation Bible School the week of June 6-10 5:15-8:10pm A light supper will be served at 5:15 p.m.

Don't forget the Ministry Workshop 2011 Training for Ministries of the Church on Saturday, Feb. 5th at Grace United Methodist Church, 11222 Leopard in Corpus Christi, TX from 8:45 a.m. to 12:30 p.m. It is designed especially for Leaders, lay speakers, committee members, trustees, finance committee, treasurers, pastor parish/Staff Parish Committees Volunteers with Children, Youth, Older Adults, and those needing ideas and help with ministry. It is sponsored by the District.

Adult Sunday School Time Changed

Effective immediately the adult Sunday School Classes will begin at 9:25 a.m. and end at 10:10 a.m. so that choir members will be able to robe and warm up before the 10:30 a.m. worship service begins. Children's Sunday School classes have not changed. Their classes begin at 9:15 a.m.

"Bring Your Own Bible" Bible Study Begins February 8th.

Skip Timmer will be leading a Bible Study on Tuesday mornings beginning at 10:00 a.m. in Fellowship Hall 1. He will begin with Genesis and continue through the Bible.

If you are interested in attending, please sign up on the sheet at the front desk.

Vol. 17 No. 2

February, 2011

Thom Elliott, Pastor

FIRST UNITED METHODIST CHURCH
P.O. BOX 1045
801 EAST MAIN
ROCKPORT, TEXAS 78381-1045
(361) 729-1659

RETURN SERVICE REQUESTED



Open hearts. Open minds. Open doors.
The people of The United Methodist Church™